

PURA[®] NFC

BY TRESPA



performance panels

UK Premium Partner

PURA[®] NFC SIDINGS LASTING AESTHETICS

T: +44 (0) 300 303 5874

E: support@pura-uk.com

W: www.pura-uk.com

PURA® NFC
PU30
Tropical Ipe

Lasting aesthetics

The NFC in Pura® NFC stands for natural fibre core. The high-pressure laminate is made of up to 70% natural fibres, which go through an advanced in-house developed manufacturing process. All Pura® NFC products are certified according to PEFC™ standard.



PURA® NFC

Pura® NFC by Trespa clads buildings in enduring elegance – maintaining its beauty and smooth surface in the face of the elements. The premium façade solution is designed to be durable, low maintenance and easily installed.

Go to PURA-NFC.COM to get inspired and see some of our customer stories.



PURA® NFC
PU24 Mystic Cedar
PU28 Siberian Larch
Project colour

TRESPA® METEON®
L90.0.0 Metropolis Black

De Barsy home and office, Boulaide, Luxembourg

PURA® NFC BY TRESPA

Stunning for decades

Pura® NFC can stand out as an architectural element or harmonise with landscapes and other building materials. Its closed surface minimises dirt build-up and makes the sidings easy to clean. It keeps buildings looking good for decades.

High impact and scratch resistance

PURA[®] NFC
PU22 Slate Ebony

Durable as a diamond

The façade protects what's behind it. But what protects the façade? Pura[®] NFC uses next-generation Electron Beam Curing (EBC) technology to create a closed and smooth surface. The system is built for rough weather and has a high impact and scratch resistance. The built-in colour stability means Pura[®] NFC will look good for years without any replacement pieces or sprucing up.



No painting
or varnishing
needed

PURA® NFC
PU02 Classic Oak



No worries about maintenance

It's wonderful to live or work in a beautiful building. It's less wonderful to climb on a ladder to scrub it every month. Pura® NFC's closed surface prevents dirt from building up, making cleaning easy and infrequent. Contaminants like soot, graffiti and permanent markers are easy to remove. Buildings keep their vibrant beauty year after year, without paintbrushes. It's yet another way that buildings with Pura® NFC façades give owners less to worry about.



The closed surface created by Trespa's proprietary Electron Beam Curing (EBC) technology makes it hard for dirt to build up, locking it out and colours in.



PURA® NFC
PU17 Aged Ash
PU24 Mystic Cedar
PU28 Siberian Larch

TRESPA® METEON®
NM04 Sintered Alloy

Private house, Dartmouth, United Kingdom

PURA® NFC BY TRESPA

Sidings are intended to be outdoors, after all

Whether it's salty sea air, wind, rain, humidity or intense sunlight, Pura® NFC stands up to the weather. Each Pura® NFC sample undergoes many laboratory tests where it's exposed to damaging climate elements, then checked to confirm it's maintained its vibrancy and polish. Imagine a stylish wooden palazzo that remains richly hued in Florida's humid year-round sunshine or a tranquil seaside home without the need for constant repair. The Pura® NFC system is engineered to stay pristine.



Harmonising with nature

PURA' NFC
PU02 Classic Oak

Individual House Jourdan,
Stembert, Belgium

A rich palette of colours

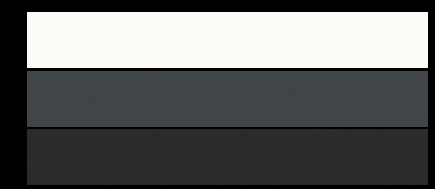
WOOD DECORS

- [PU02 Classic Oak](#)
- [NEW PU14 French Walnut](#)
- [NEW PU31 Western Red Cedar](#)
- [PU08 Romantic Walnut](#)
- [PU30 Tropical Ipe](#)
- [PU28 Siberian Larch](#)
- [PU24 Mystic Cedar](#)
- [PU17 Aged Ash](#)
- [PU22 Slate Ebony](#)



LUMEN

- [NEW PUL0500 Athens White](#)
- [PUL2581 New York Grey](#)
- [PUL9000 Metropolis Black](#)



Pura' NFC Lumen gently diffuses light for a modern or ethereal look. Its low reflection of light gives the façade a smooth matt appearance.

PURA' NFC BY TRESPA

NEW

PURA® NFC Lumen
PUL9000
Metropolis Black

PURA® NFC

A complete solution

Pura® NFC comes with a tailored collection of installation clips, colour-matched profiles and fasteners - everything needed to create an evenly hued façade. Every detail can look exactly as it was designed to. The sidings come prefinished, but if they need to be fitted for a dormer or eaves, the strength of Pura® NFC means installers can saw without splinters or shattering. Also, the edges don't need sealing – the durability and hue go all the way through. Corners stay sharp and flats stay smooth.

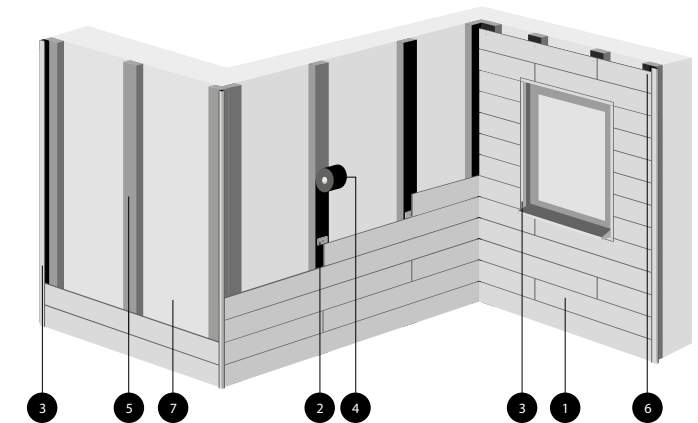
PURA® NFC
PU24
Mystic Cedar

PURA® NFC BY TRESPA

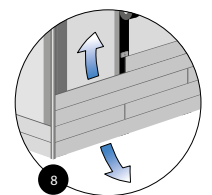
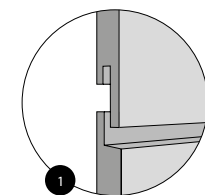
Easily installed, never redone

No-fuss installation

Pura[®] NFC is engineered to be used in a ventilated façade solution that's easily installed. The relatively low weight of the prefinished sidings makes them easy to slide into place and their durability means they can handle a rough build site. The combination of durability and ventilation helps Pura[®] NFC withstand challenging climates.



1. PURA[®] NFC siding
2. PURA[®] NFC clip
3. Colour-matched profile
4. EPDM
5. Subframe
6. Colour-matched fasteners
7. Load-bearing wall
8. Ventilation airflow



The system includes an air cavity in front of the load-bearing wall, allowing an airflow that prevents heat or moisture accumulation.

This sketch is intended as a general overview only.



Scan the QR code for installation videos and specification information.
PURA-UK.COM/SUPPORT.

PURA[®] NFC
PU08 Romantic Walnut

Delivery programme

WOOD DECORS	COLOUR CODE	COLOUR NAME	CORE		FINISH
			Brown	Black	Matt
	PU02	Classic Oak	•		•
NEW	PU14	French Walnut	•		•
NEW	PU31	Western Red Cedar	•		•
	PU08	Romantic Walnut	•		•
	PU30	Tropical Ipe	•		•
	PU28	Siberian Larch	•		•
	PU24	Mystic Cedar	•		•
	PU17	Aged Ash	•		•
	PU22	Slate Ebony		•	•

LUMEN	COLOUR CODE	COLOUR NAME	CORE		FINISH
			Brown	Black	Diffuse
NEW	PUL0500	Athens White		•	•
	PUL2581	New York Grey		•	•
	PUL9000	Metropolis Black		•	•

SPECIAL REQUEST

Looking for different colours? Pura® NFC is available in a wide range of Trespa® colours and decors. For more information, please contact Performance Panels..

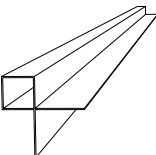


Order samples at
PURA-UK.COM/SAMPLES.

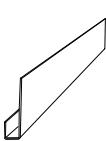
PREFINISHED SIDINGS

SIDING		PACK		FULL PALLET	
Size	3050 x 186 x 8 mm	Quantity	4 Sidings	Quantity	144 Sidings / 36 packs
Surface (gross)	0,57 m²	Weight indication	26 kg		
Surface (net)	0,55 m²				

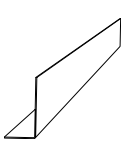
FASTENERS AND MATCHING ACCESSORIES



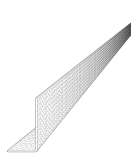
Proface®
outer-corner profile



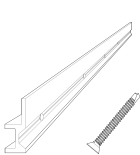
Proface®
finish profile



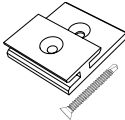
Proface®
support profile*




Ipex universal
ventilation profile**



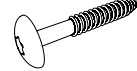
Ipex universal starter rail
and matching SFS screw**



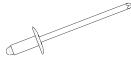
Universal clip and
matching SFS screw




SFS
profile screws



SFS
HPL fast fixing screws



SFS
rivet



SFS Self-Flex EPDM joint tape
25 m x 0,8 x 70 mm
25 m x 0,8 x 130 mm

*only available in black core, brown core | **only available in black

PROFILES, HPL SCREWS AND RIVETS ARE AVAILABLE IN THE FOLLOWING COLOURS:



Classic Oak
(PU02)




French Walnut
(PU14)



Western
Red Cedar
(PU31)




Romantic
Walnut
(PU08)



Tropical Ipe
(PU30)



Siberian Larch
(PU28)



Aged Ash (PU17)/
Mystic Cedar (PU24)




Brown core



Black core/Black
(PU90)




Slate Ebony
(PU22)




New York Grey
(PUL2581)



Metropolis Black
(PUL9000)



Athens White
(PUL0500)



Aluminium
(PU00)

For specifics about fixing solutions, please visit our website PURA-UK.COM/SUPPORT

TRESPA - THE ARCHITECTS' CHOICE FOR OVER 60 YEARS

Pura® NFC is designed and created by Trespa, a specialist panelling and siding company headquartered in the Netherlands. Founded in 1960, Trespa is the first choice of exterior panelling for many of the world's leading architects, who insist on quality, reliability and durability for their projects.



PURA® NFC

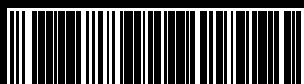
UK PREMIUM PARTNER:

Performance Panels Limited
Carvic House
Black Brook Way
Stainland Road
Greetland
Halifax
HX4 8ED
United Kingdom

T: +44 (0) 300 303 5874
E: support@pura-uk.com
W: www.pura-uk.com

PURA® NFC
PU28 Siberian Larch

DISCLAIMER The disclaimer that follows is a summary of the applicable full disclaimer (which can be found on www.trespa.com). The information provided by Trespa International B.V. ("Trespa") in this document is solely indicative. Trespa is unable to warrant the accuracy and completeness of this information. No rights can be derived from the information provided; the use of the information is at the other party's risk and responsibility. This document does not guarantee any properties of Trespa's products. Trespa does not warrant that the information in this document is suitable for the purpose for which it is consulted by the other party. The document does not contain any design, structural calculation, estimate or other warranty or representation that customers and third parties may rely on. Colours used in Trespa's communications (including but not limited to printed matter) and in samples of Trespa's products may differ from the colours of the Trespa's products to be supplied. Trespa's products and samples are produced within the specified colour tolerances and the colours (of production batches) may differ, even if the same colour is used. The viewing angle also influences the colour perception. Customers and third parties must have a professional adviser inform them about (the suitability of) the Trespa's products for all desired applications and about applicable laws and regulations. Trespa reserves the right to change (the specifications for) its products without prior notice. To the maximum extent permitted under the applicable law, Trespa is not liable (neither contractual nor non-contractual) for any damage arising from or related to the use of this document, except if and to the extent that such damage is the result of wilful misconduct or gross negligence on the part of Trespa and/or its management. All oral and written statements, offers, quotations, sales, supplies, deliveries and/or agreements and all related activities of Trespa are governed by the Trespa General Terms and Conditions of Sale (Algemene verkoopvoorwaarden Trespa International B.V.). All oral and written statements, offers, quotations, sales, supplies, deliveries and/or agreements and all related work of Trespa North America, Ltd. are governed by the Trespa General Terms and Conditions of Sale, which can be found on and downloaded from the Trespa website, www.trespa.com/documentation. All intellectual property rights and other rights regarding the content of this document (including logos, text and photographs) are owned by Trespa and/or its licensors.



U1109-432284 | Version 1.0
Brochure code U1109 | Date 07-2020



performance panels